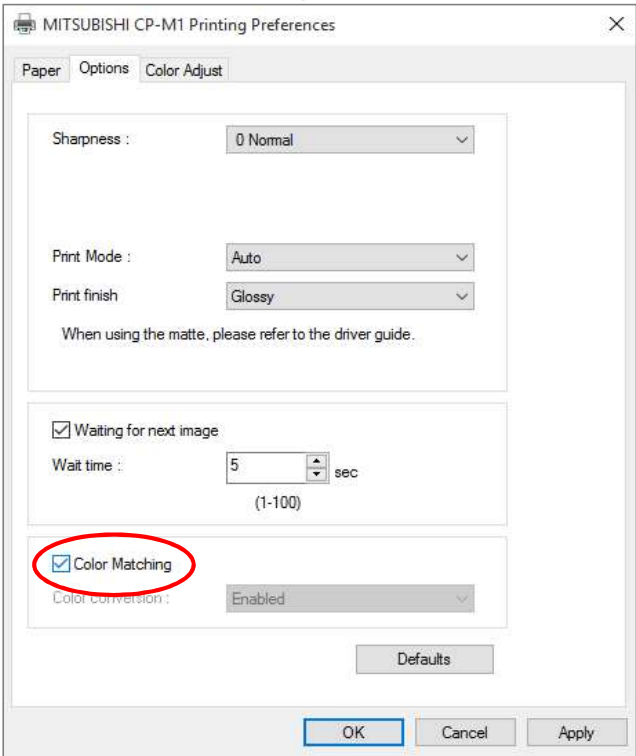
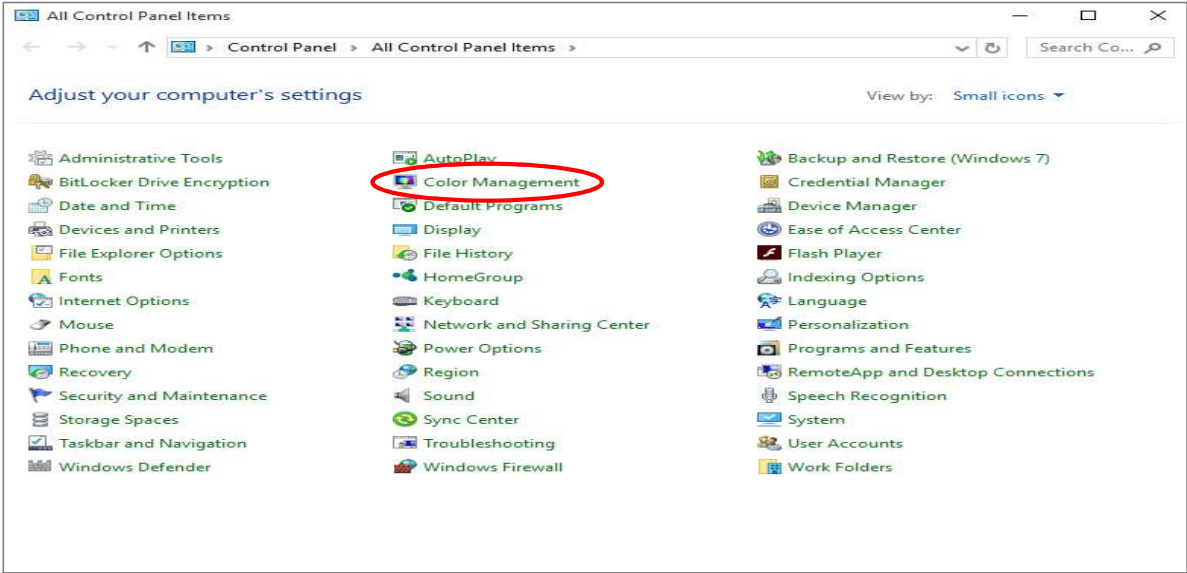


Preparation and confirmation in advance  
For Windows driver & Mac driver

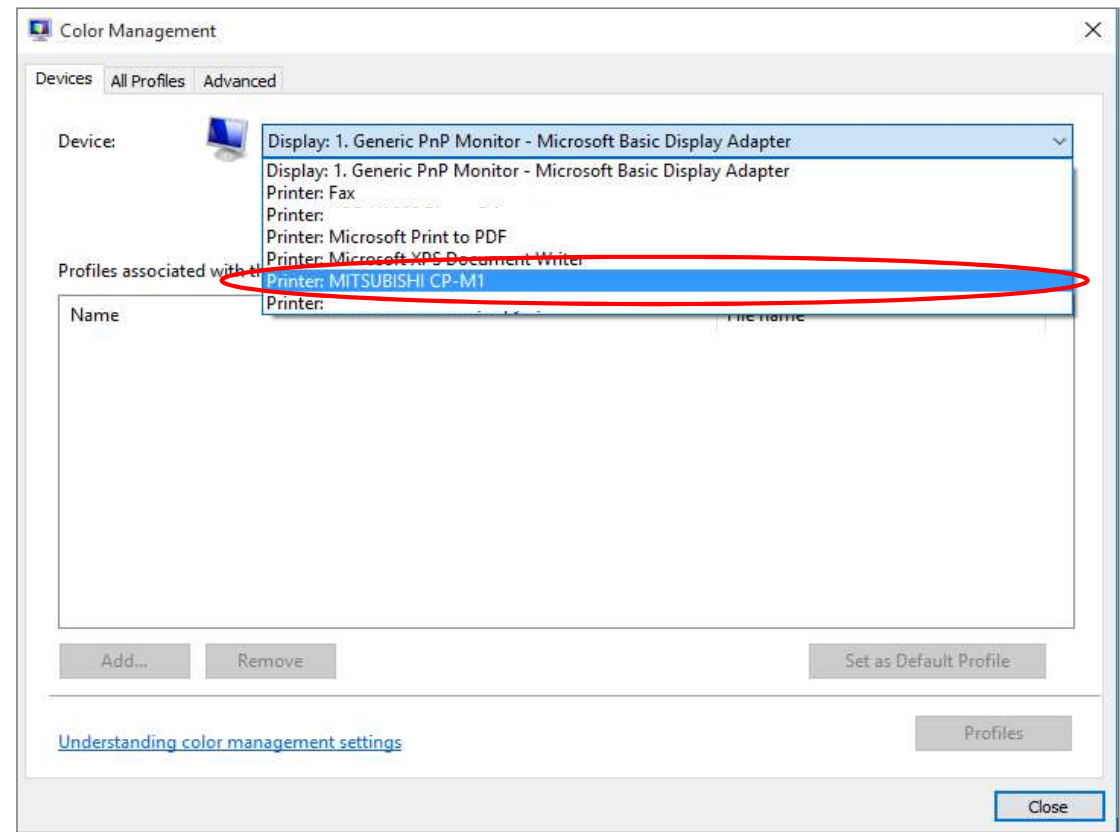
Contents											
1	You must be logged in as an administrator on the PC to be installed.										
2	The driver for CP-M1 must already be installed on the PC. The driver's URL: <a href="https://www.mitsubishielectric.co.jp/ldg/ja/visual/products/printer/photo/download_01_english.html">https://www.mitsubishielectric.co.jp/ldg/ja/visual/products/printer/photo/download_01_english.html</a>										
3	Download the ICC profile from the URL above. <div><table><tr><th>Compressed file</th><th>Decompressed files</th></tr><tr><td rowspan="3">ICCProfile_Natural.zip</td><td>CPM1_Natural.icc</td></tr><tr><td>CPM1_G5.csv</td></tr><tr><td>icc profile instructions in driver.pdf</td></tr><tr><td rowspan="3">ICCProfile_Vivid.zip</td><td>CPM1_Vivid.icc</td></tr><tr><td>CPM1_G5.csv</td></tr><tr><td>icc profile instructions in driver.pdf</td></tr></table></div>	Compressed file	Decompressed files	ICCProfile_Natural.zip	CPM1_Natural.icc	CPM1_G5.csv	icc profile instructions in driver.pdf	ICCProfile_Vivid.zip	CPM1_Vivid.icc	CPM1_G5.csv	icc profile instructions in driver.pdf
Compressed file	Decompressed files										
ICCProfile_Natural.zip	CPM1_Natural.icc										
	CPM1_G5.csv										
	icc profile instructions in driver.pdf										
ICCProfile_Vivid.zip	CPM1_Vivid.icc										
	CPM1_G5.csv										
	icc profile instructions in driver.pdf										

Installation Procedure  
For Windows driver

CONTENTS (The captured screen is an example of Windows 10.)	
1	Open the following folder. C:¥Windows¥System32¥spool¥drivers¥x64¥3
2	Rename the CPM1_G5.csv file in the folder. (Renaming example : CPM1_G5original.csv )
3	Copy and place the CPM1_G5.csv file that you downloaded from the website into the folder above. When the ICC profile is applied, select "Color Matching ON" on the driver setting screen (Fig. 3.1). CPM1_G5.csv is a setting file that is applied when color matching is turned on. <div><p>Fig. 3. 1</p></div> <p>The details of the driver setting screen can be found on page 7 of CPM1DriverGuideE_V100.</p>
4	Open the following folder. C:¥Windows¥System32¥spool¥drivers¥color
5	Copy and place the ICC profile (*.icc) downloaded from the website into the above folder.
6	Connect the ICC profile. Please follow the steps below.  Open the Control Panel and select the "Color Management" icon to open it. (Fig. 6.1) <div><p>Fig. 6. 1</p></div>

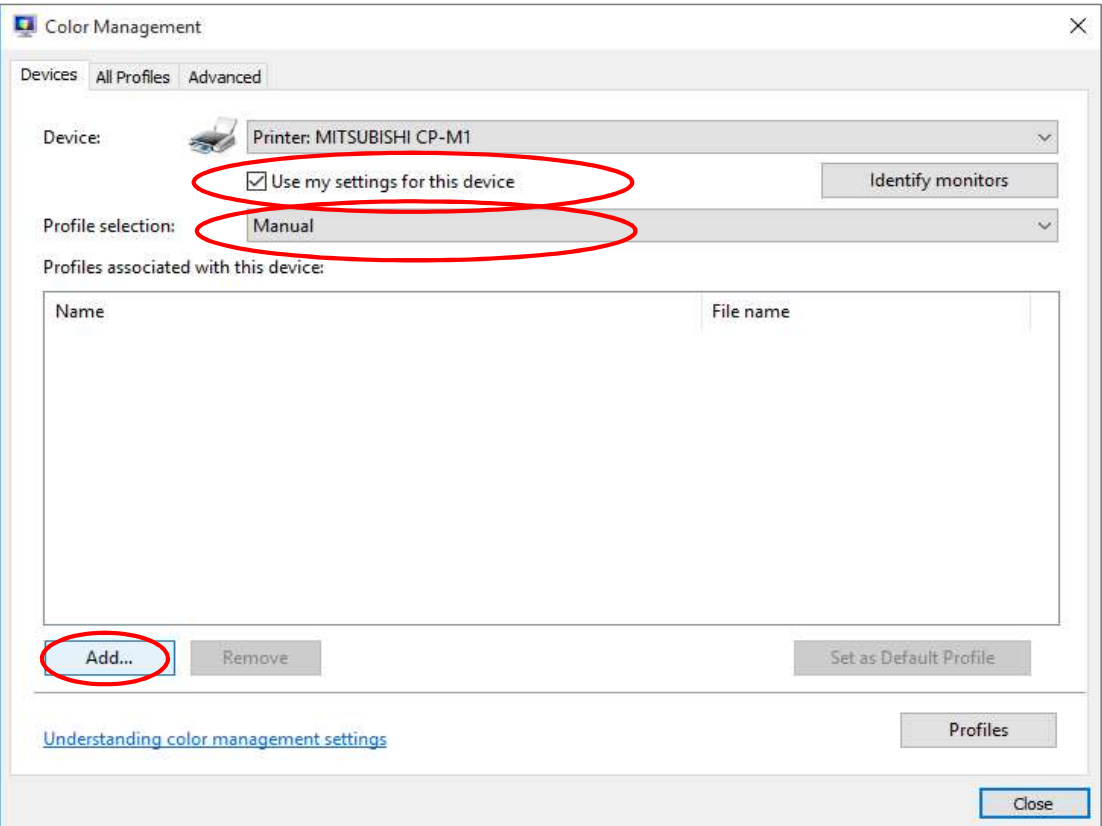
Select CP-M1 from the pull-down menu in the Devices tab. (Fig. 6. 2)

Fig. 6. 2



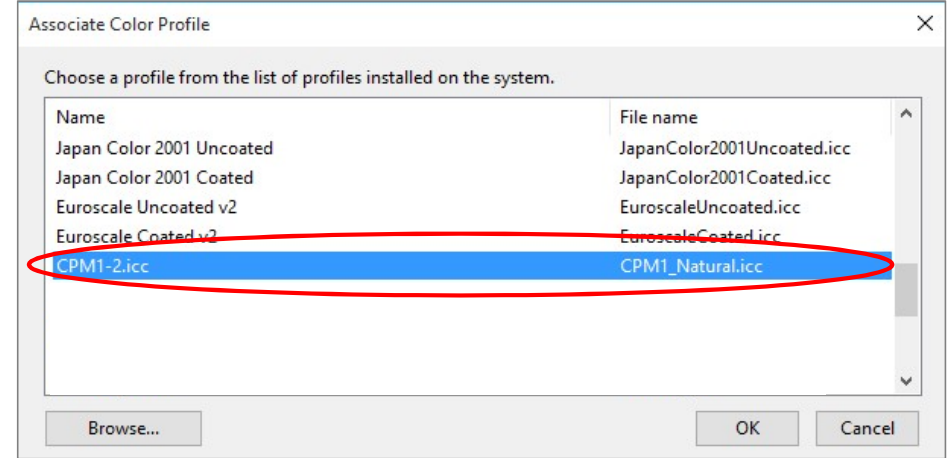
Check the "Use my settings for this device" checkbox, and then  
Select "Manual" for the profile selection and click the "Add" button in the lower left corner (Fig. 6.3).

Fig. 6. 3



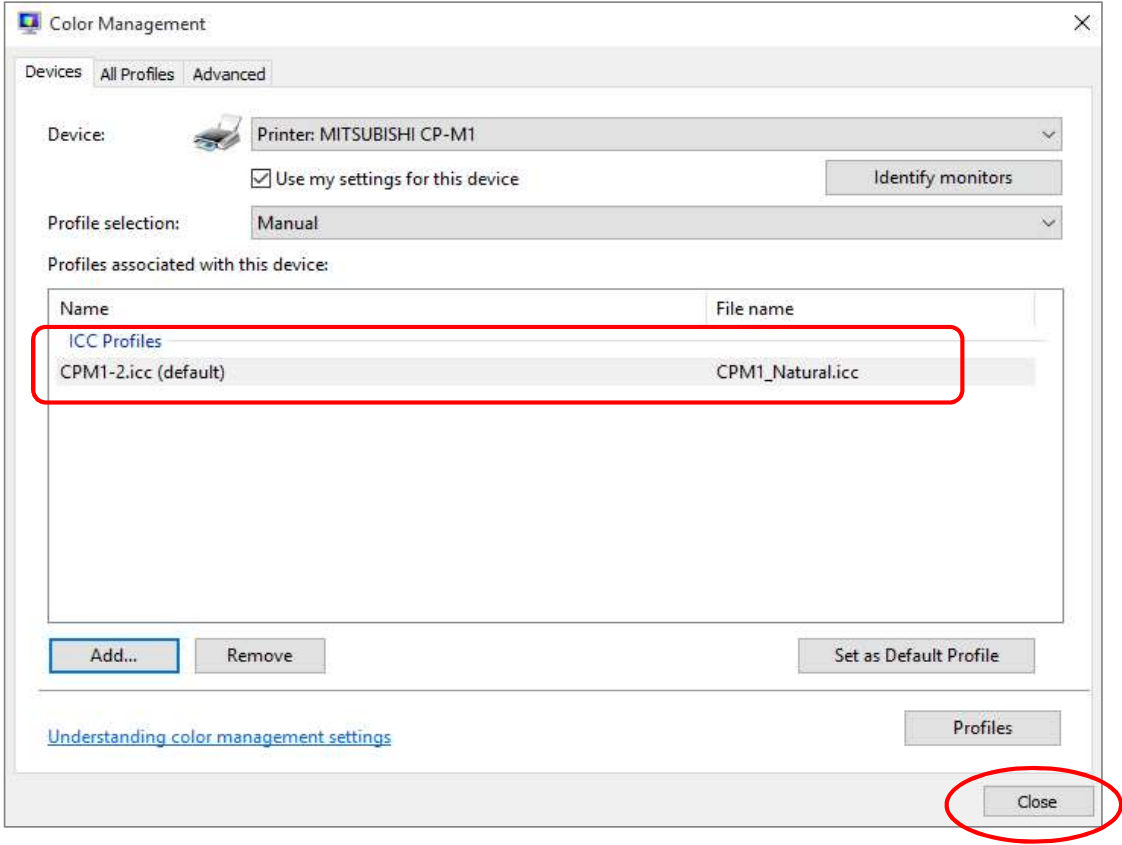
Select the ICC Profile to be applied (CPM1\_Natural or CPM1\_Vivid). (Fig. 6.4)

Fig. 6. 4



Confirm the file name and click "Close" at the bottom right of the screen. (Fig. 6.5)

Fig. 6. 5



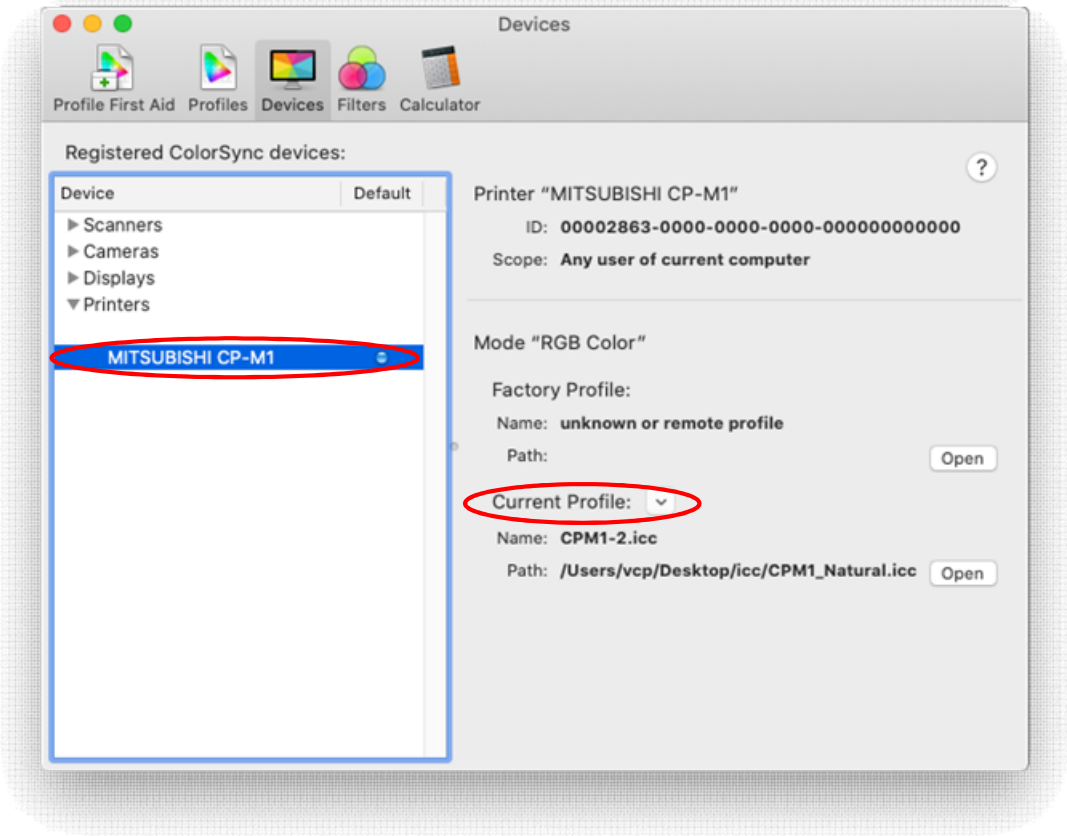
7 As a result of the above, the added profile will be applied to the final print.

For Mac driver

	CONTENTS (The captured screen is an example of Mac OS Version 10.15.1.)
1	Open the following folder. /Libraries/Printers/MITSUBISHI/filter
2	Rename the CPM1_G5.csv file in the folder. (Renaming example : CPM1_G5original.csv )
3	Copy and place the CPM1_G5.csv file that you downloaded from the website into the folder above.

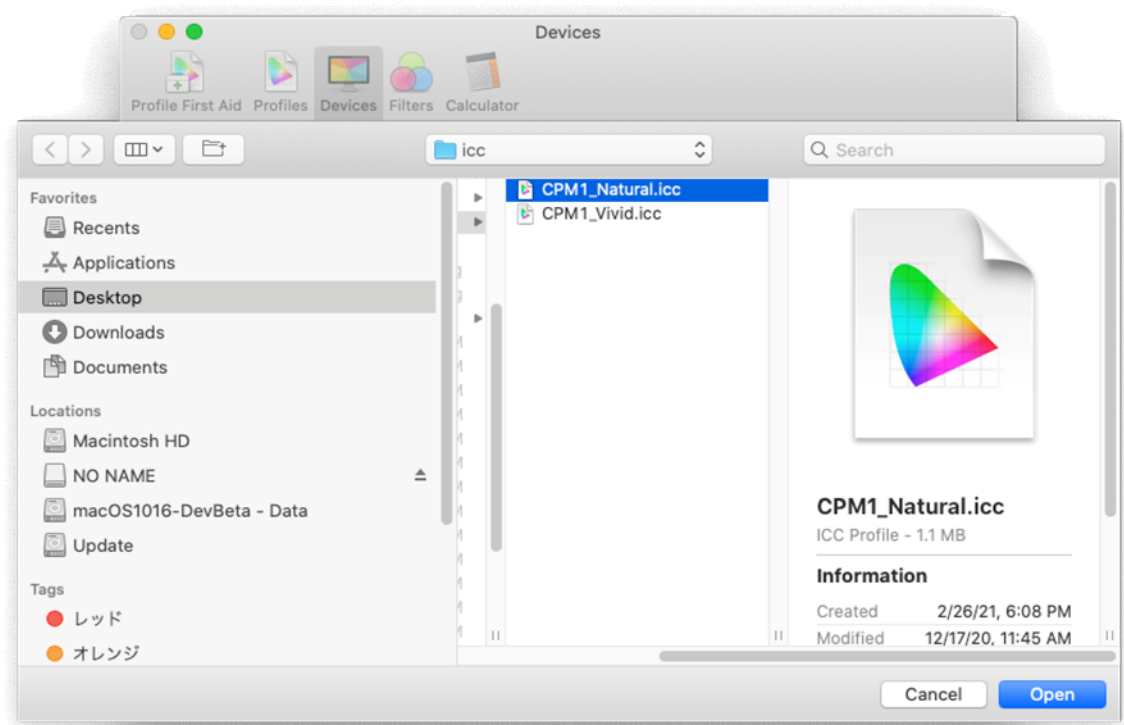
4 Open your Mac's Color Sync application and select MITSUBISHI CP-M1.  
Click the icon next to Current Profile and select other. (Fig. 4. 1)

Fig. 4. 1



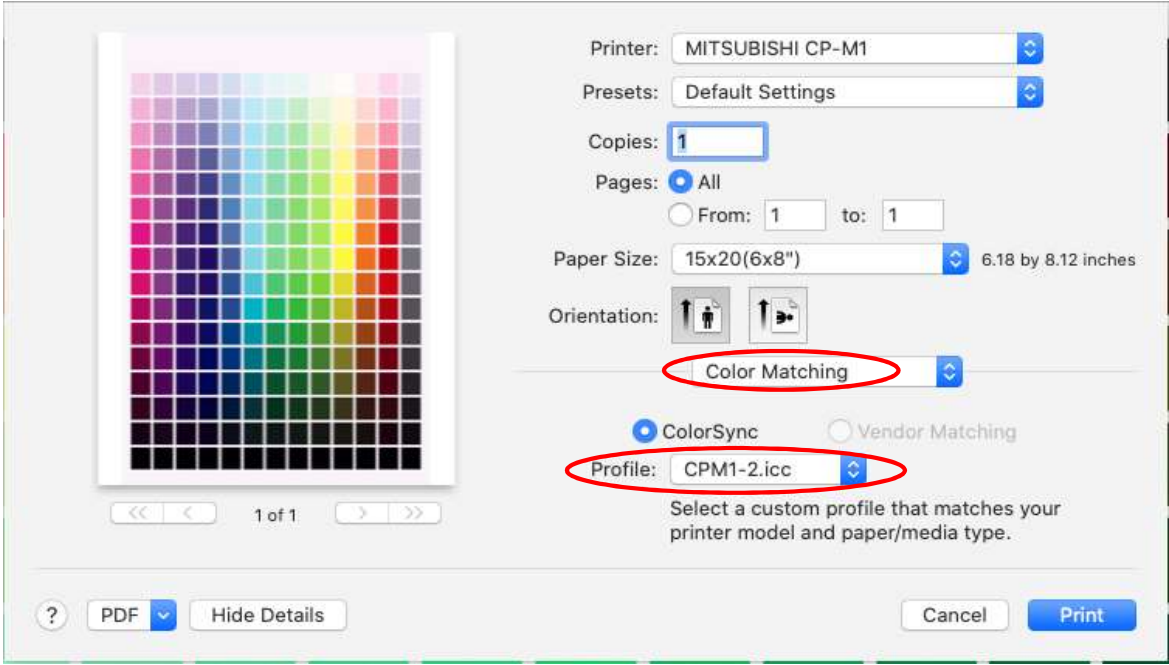
Select the ICC Profile to be applied (CPM1\_Natural or CPM1\_Vivid). (Fig. 4. 2)

Fig. 4. 2



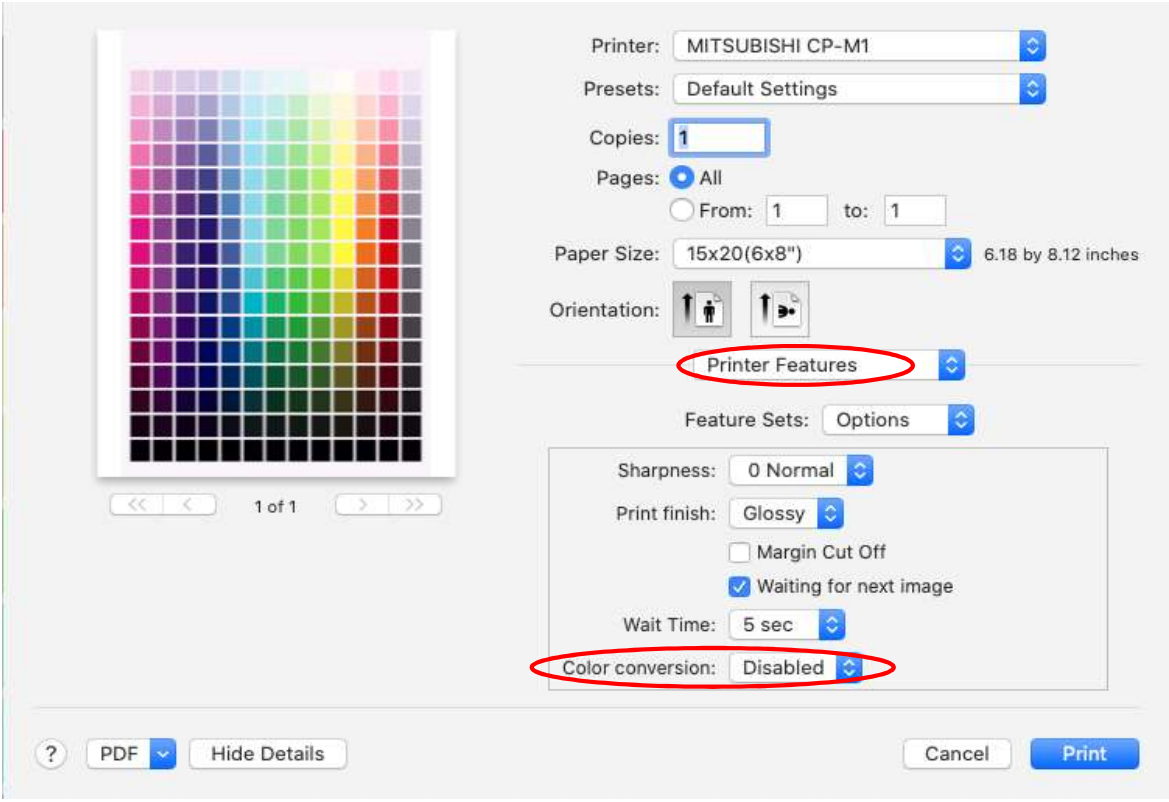
Open the image to print with ColorSync Utility.  
Select Color Matching and Profile "CPM1-2.icc" (Fig. 4. 3)

Fig. 4. 3



Select Printer Features and Color conversion "Disabled". (Fig. 4. 4)

Fig. 4. 4



5 As a result of the above, the added profile will be applied to the final print.